

BELGIUM

ANGELO

A

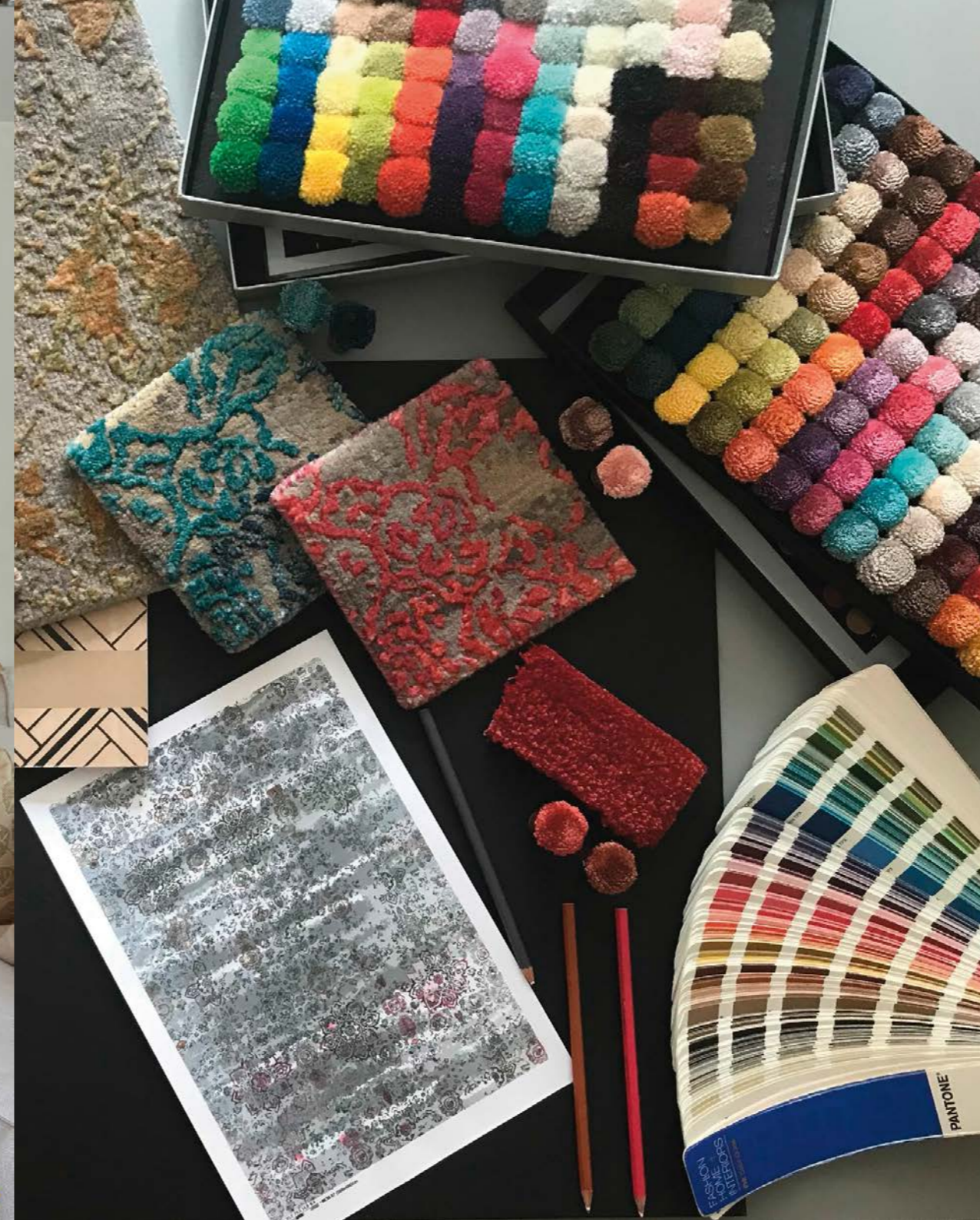
**ANGELO**  
FINE RUGS AND CARPETS  
BELGIUM

[WWW.ANGELORUGS.COM](http://WWW.ANGELORUGS.COM)

**ANGELO**  
FINE RUGS AND CARPETS



SILKY 3059-00  
CHRISMA



## ABOUT US

Founded in 1999 by Fiona De Witte, ANGELO is a Belgian brand that designs, creates and commercializes contemporary rugs.



ANGELO collection offers a wide range of handmade rugs mainly: Handknotted, handwoven and tufted rugs.

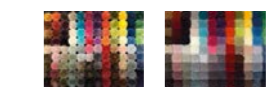
The company has built its international reputation based on its high quality, its innovative spirit and its originality.

Collections are designed to fit retailers and interior designers' targets. Specific designs are developed for projects.

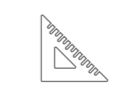
## BESPOKE PROJECT

Our designers' studio offers you the possibility to create your very unique and exclusive rug. You have the opportunity to either reinvent our classic with your colours, sizes and shapes, or we can create your own design. Our wide range of colors allows you to choose color combinations to suit all your needs.

Custom-made specialist, our designers will guide you throughout your project, from the selection of materials to the choice of colors.



Re-imagine the colors!



Create the perfect bespoke size!



# REVENGE

Symphonies of a chaotic mind.



4850-REV632



4850-REV225

Quality:  
Handknotted

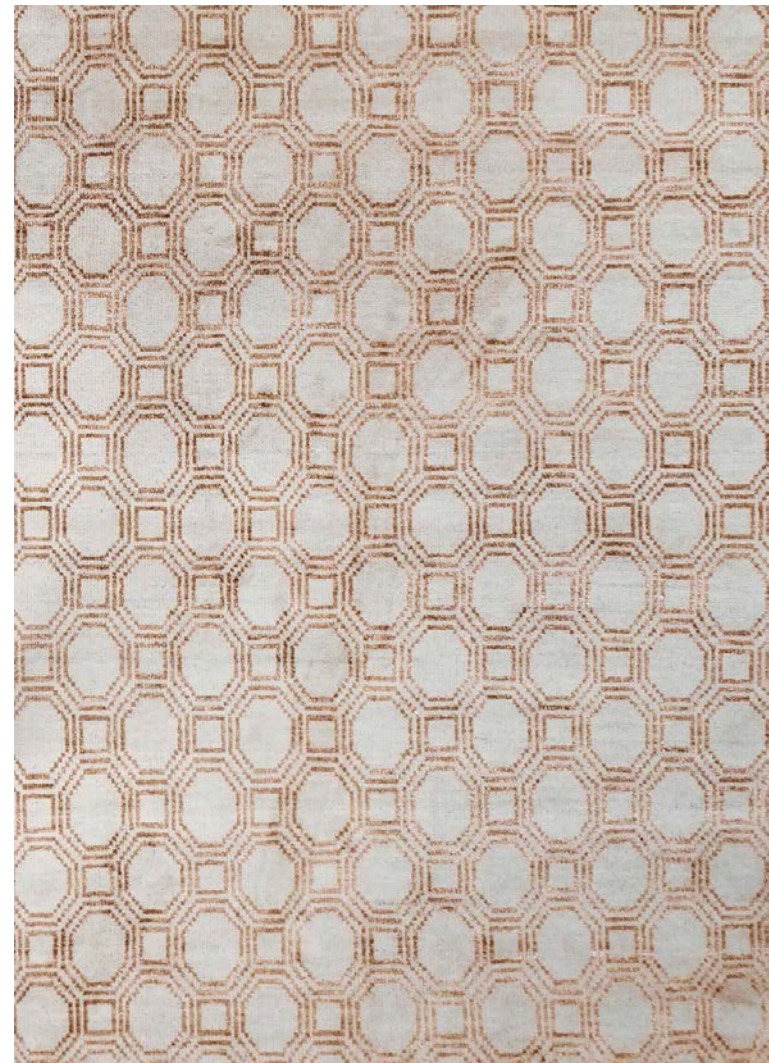
Composition:  
New Zealand  
Wool and  
Viscose

170  
x  
240

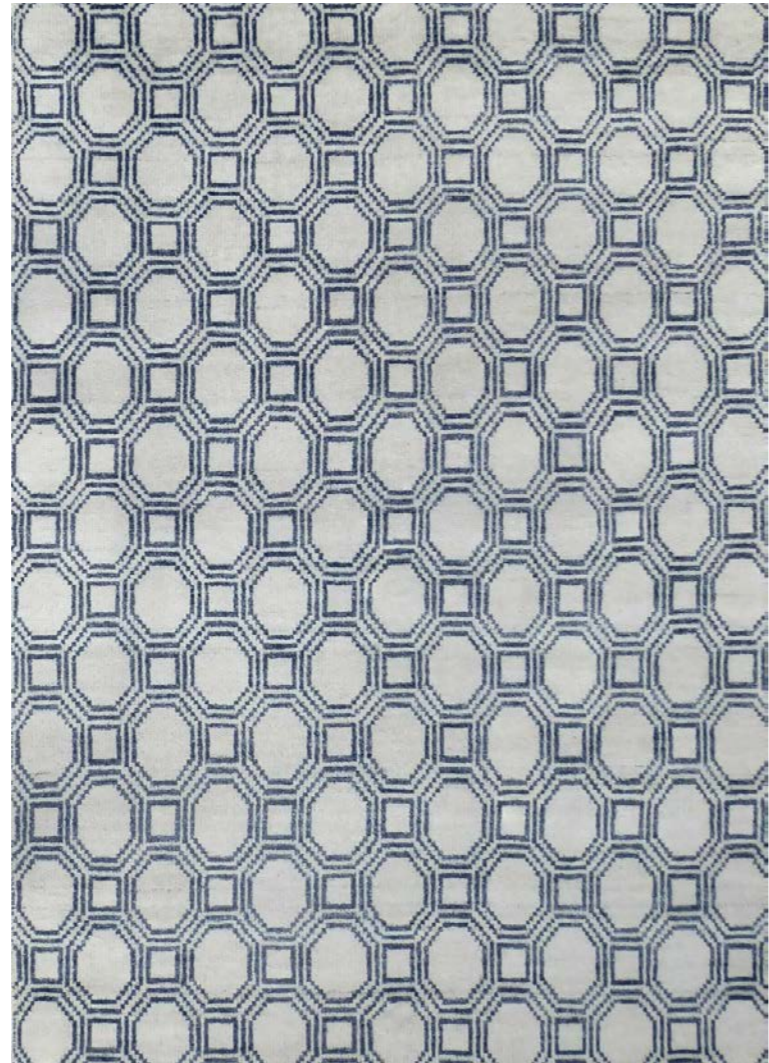


# LEGACY

Refined. Design by Karine Bonjean.



4900-GEN330



4900-GEN556

Quality:  
Handknotted

Composition:  
Wool &  
Bamboo Silk

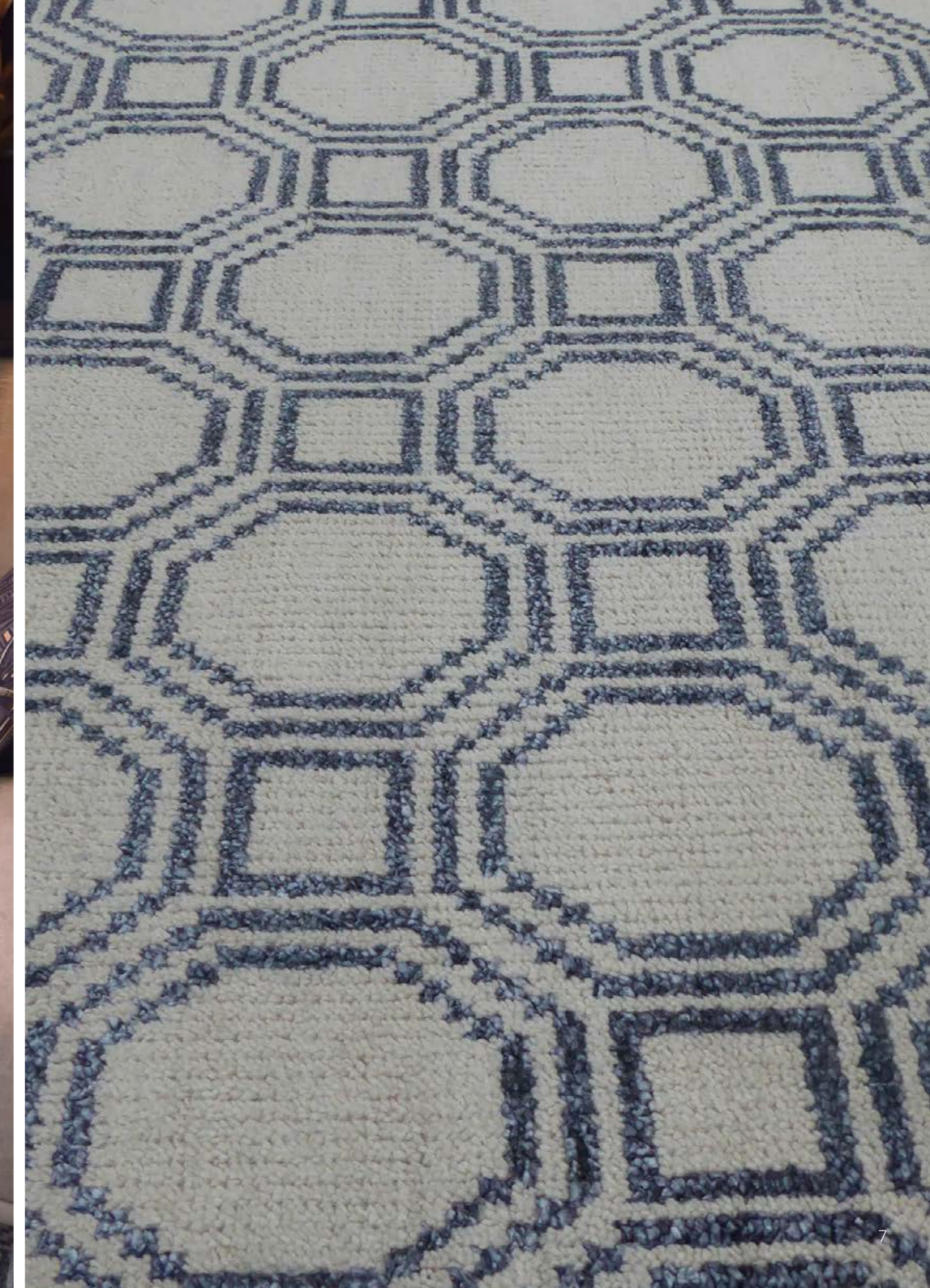
170  
x  
240

200  
x  
300

300  
x  
400



Photo Credit: Interior Home & Living

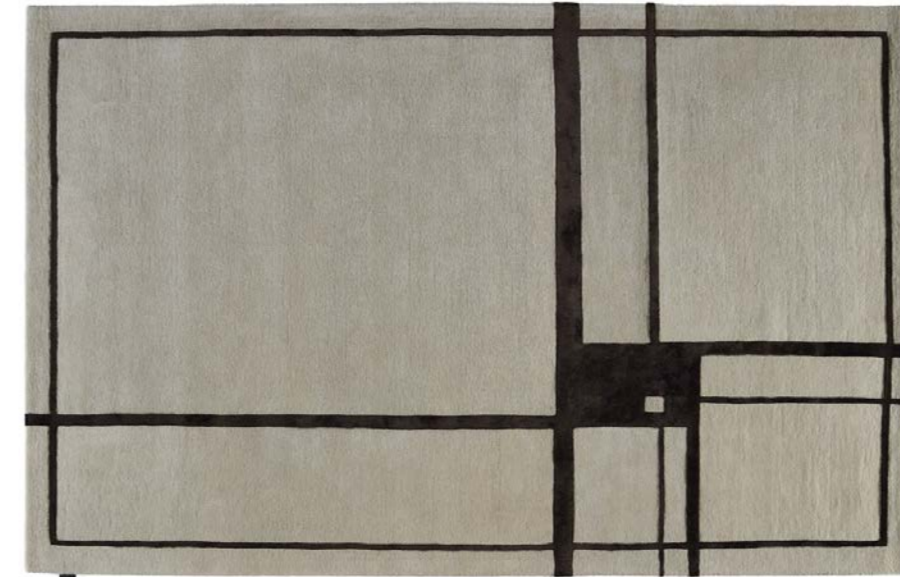




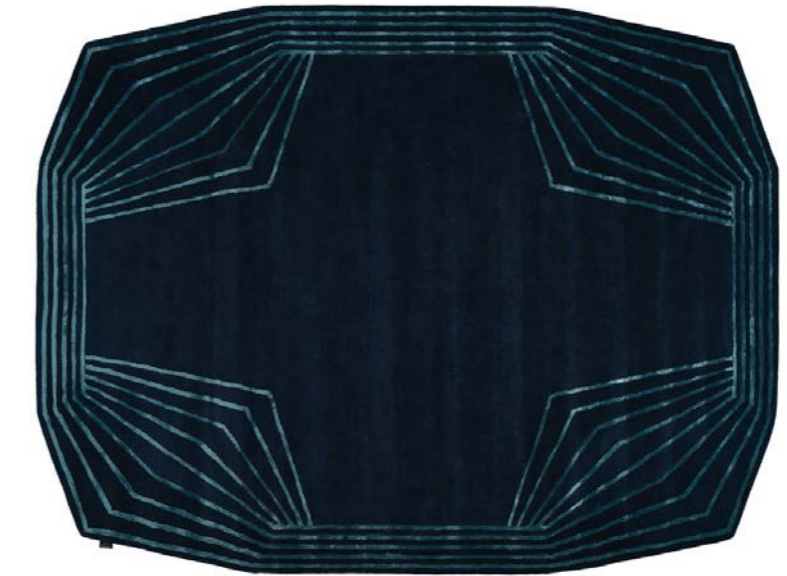
# SIGNATURE THOMAS KING



His work has been influenced by a diversity of experiences ranging from the structural influencer of architect up to a love of detail.



640-TKGRT-500



640-TKDOD-225



640-TKGRT-632



640-TKDOD-632

Quality:  
Handtufted

Composition:  
New Zealand  
Wool and  
Viscose

200  
x  
315

GOLDEN RATIO

250  
x  
330

DODECA

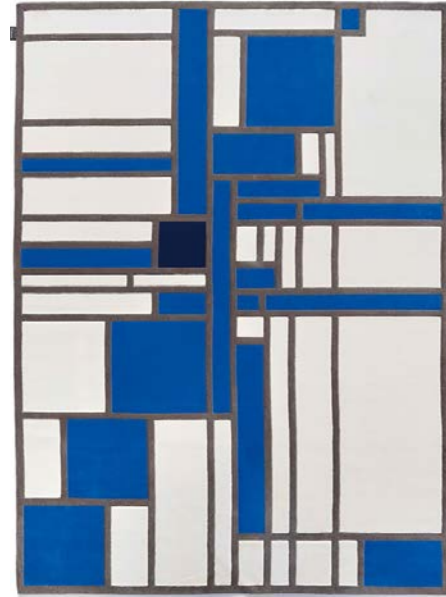


# SIGNATURE

## LOUIS HERMAN DE KONINCK



Iconic architect, Louis Herman De Koninck stands out by an approach based on shapes, structures and a high sensitivity with figures.



640-LHDKV1SP

## JEAN-FRANÇOIS D'OR



His simple, unpretentious, logical objects appeal as much on for their evident, clearly perceptible design as well as their discrete poetry.



640-JFP4-444

## JULES WABBES

Jules Wabbes is one of the main representatives of the Belgian 60s and 70s design. His sober and intemporal designs impose themselves as true classics. Editions Jules Wabbes 2010.



640-JWQD4J1

Quality:  
Handtufted

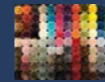
Composition:  
New Zealand  
and Viscose

180  
x  
301

JEAN-FRANÇOIS D'OR

200  
x  
300

JULES WABBES  
LOUIS HERMAN  
DE KONINCK





# LONDON

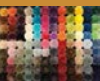
Fabulously rich and elegant.



Quality:  
Handtufted

Composition:  
New Zealand  
Wool & Viscose

200  
x  
300



640-AD2-033

# HERITAGE

Being modern does not mean disengage from your heritage.



5100-L1+R3



5100-655



5100-225

Quality:  
Handknotted

Composition:  
Wool &  
Bamboo Silk

170  
x  
240

200  
x  
300



Photo credit: Luc Viatour



# HERITAGE SCOTTISH

Being modern does not mean disengage from your heritage.



5100-SC-L1R3



5100-SC-L2R2



5100-SC-N4Q4

Quality:  
Handknotted  
100 knots

Composition:  
Wool &  
Bamboo Silk

170  
x  
240

200  
x  
300



# SILKY

Emerging from the dark night of the Soul into the penetrating Light of consciousness.



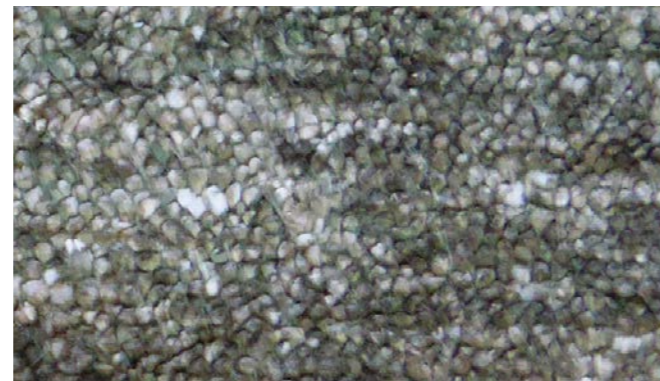
3059-0



3059-15



3059-80



3059-R3



3059-56



3059-57



3059-632

Quality:  
Handknotted  
80 knots

Composition:  
100%  
Bamboo Silk -  
Handspun Yarn

170  
x  
240

200  
x  
300

300  
x  
400





# SILKY DESIGN

Tradition and modernity are subtly melted.



3060-52



3061-632



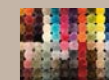
3060-DUN5657

Quality:  
Handknotted  
80 knots

Composition:  
100%  
Bamboo Silk -  
Handspun Yarn

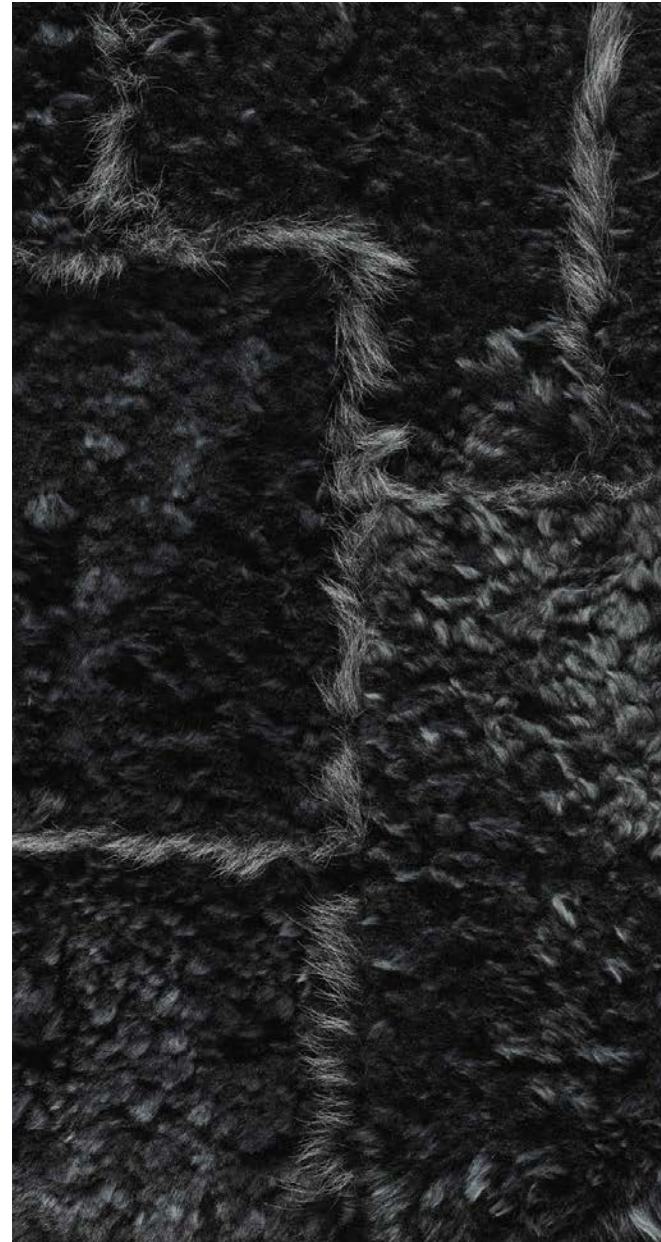
170  
x  
240

200  
x  
300

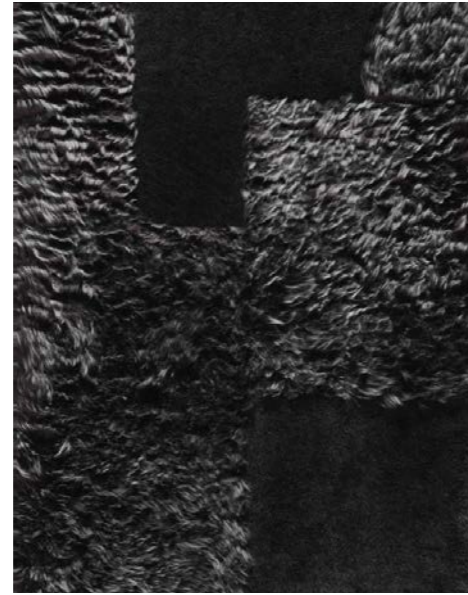


# BAIKAL

When luxury meets sensuality.



3111-PALO57



3111-BLO55



3111-BR57



3111-BLO632



3111-PASH85



3111-BLSH00

Quality:  
Handmade

Composition:  
100%  
Lambswool



3111-BLO630

Photo Credit: The National Golf, Bruxelles



# MAJESTIC

Simplicity is the keynote of all true elegance.



3080-L1



3080-600



3080-056

Quality:  
Handknotted  
80 knots

Composition:  
Bamboo silk &  
handspun wool

170  
x  
240

200  
x  
300

300  
x  
300



# TENCELLA

Virtuous and bright for an imperial result.



6036-30



6036-47



6036-58



6036-600



6036-54



6036-56



6036-632

Quality:  
Handtufted

Composition:  
100% Tencel

200  
x  
300

300  
x  
400



Photo Credit: Isabelle Leclercq - Créatrice d'univers - Photo Serge Anton



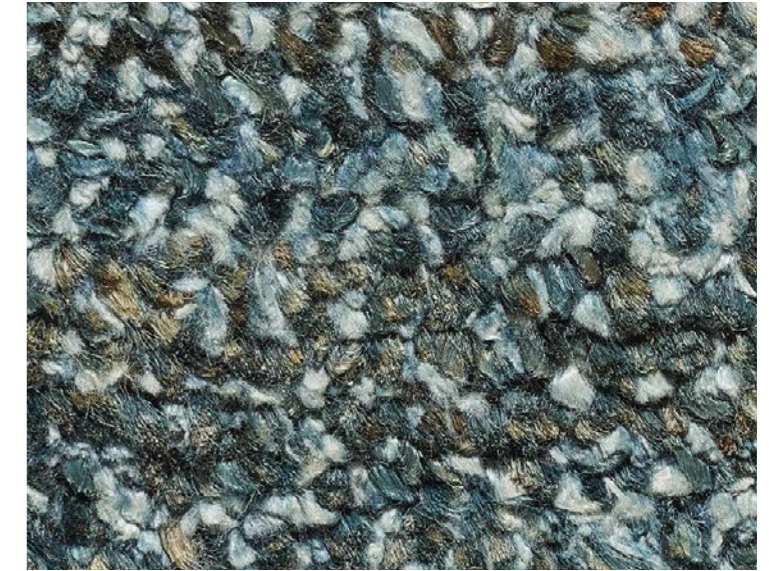


# SIENA

Why can you not be both gentle and rough?



3666-355



3666-221



3666-680

Quality:  
Handknotted

Composition:  
Bamboo Silk  
and Jute

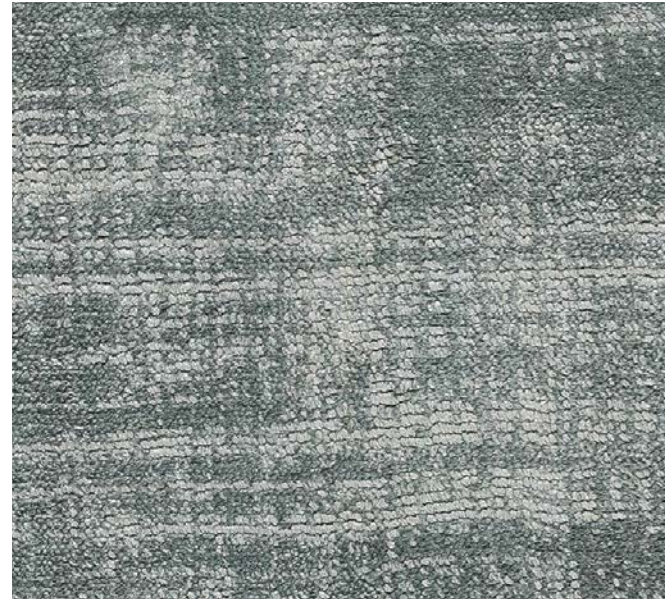
170  
x  
240

200  
x  
300

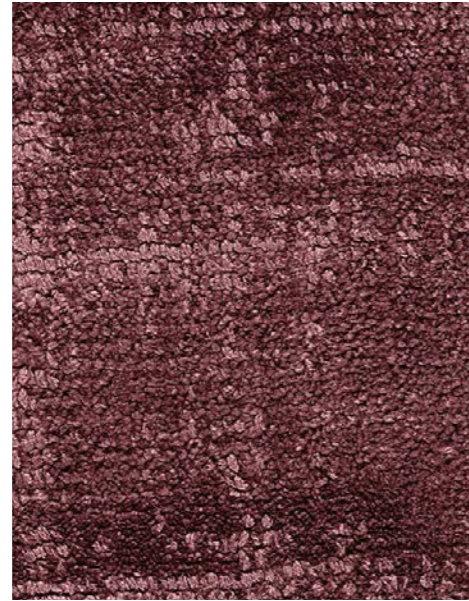


# ERASED

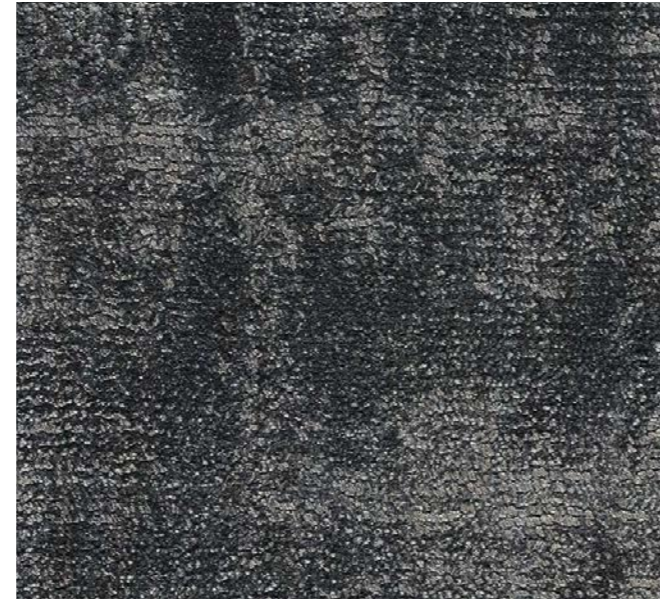
This tip sheared rug is perfect for a vintage effect.



2174-56



2174-K3



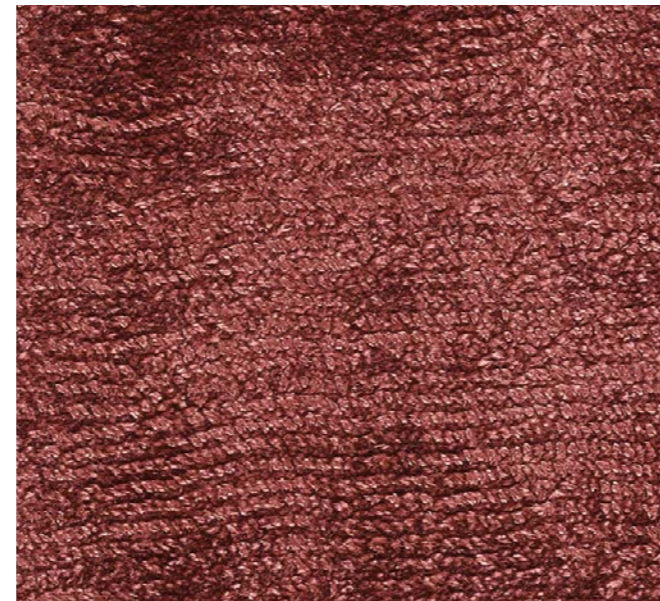
2174-57



2174-632



2174-J12



2174-C032

Quality:  
Handwoven

Composition:  
100% Viscose

140  
x  
200

170  
x  
240

200  
x  
300

300  
x  
400







# ANNAPURNA

The vegetable silk is soft, the brightness changes according to the light.



2170-04



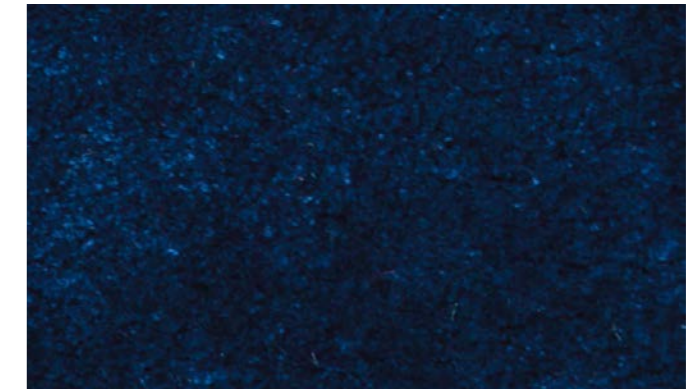
2170-29



2170-N2



2170-57



2170-K11



2170-J1

Quality:  
Handtufted

Composition:  
100% Viscose

170  
x  
240

200  
x  
300

300  
x  
400



# MUSTI

Intimate mix and match.



2175-632



2175-55



2175-57

Quality:  
Handtufted

Composition:  
50% Wool  
50% Viscose

140  
x  
200

170  
x  
240

200  
x  
300



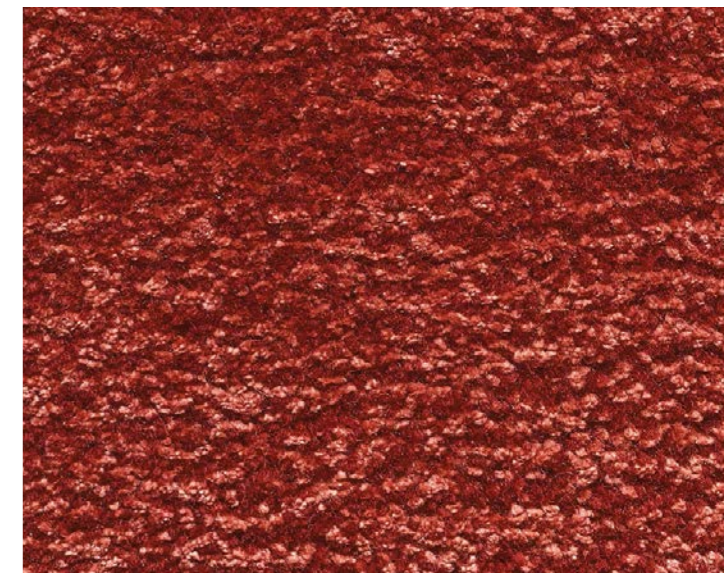


# BANGKOK

A subtle blend of wool and viscose in spicy colours.



2171-A1+L1



2171-B2+J8



2171-C2+L2

Quality:  
Handtufted

Composition:  
60% New  
Zealand Wool,  
40% Viscose

170  
x  
240



# SAHARA

Whether you are spicy or delicate, you will shine!



2170-CA444



2170-CA999

Quality:  
Handtufted

Composition:  
100% Viscose

170  
x  
240

200  
x  
300





# FAUX SILK

Endless brightness.



ZEN  
5575-636



BELLBIRD  
5576-03



BELLBIRD  
5576-85



BELLBIRD  
5576-585



CLARITY  
5577-04



ZEN  
5575-03



ZEN  
5575-56



CLARITY  
5577-57



CLARITY  
5577-632

Quality:  
Tufted

Composition:  
100% PA

200  
x  
300

300  
x  
400



# FAUX SILK

Shine bright like a diamond.



PAX  
5570-57



PAX  
5570-85



PAX  
5570-330



AFFINITY  
5574-57



AFFINITY  
5574-32



MILAN  
5572-330



AFFINITY  
5574-221



MILAN  
5572-78



MILAN  
5572-632

Quality:  
Tufted

Composition:  
100% PA

200  
x  
300

300  
x  
400



PAX 5570-330  
Photo credit: Hgroup - bibihome



5512-55

Photo Credit: Art Rotana – Amway Islands

# BERGAMO

Energy is contagious.



5512-853



5512-635



5512-55

Quality:  
Handwoven

Composition:  
100%  
Polyester

170  
x  
240

200  
x  
300



# LAURA

Relax in a plush atmosphere.

Photo Credit: Remake-HouseOfStyling



46

3543-56



3543-500



3543-632

Quality:  
Handwoven

Composition:  
Mix Polyester,  
Wool & Viscose

140  
x  
200

170  
x  
240

200  
x  
300



47



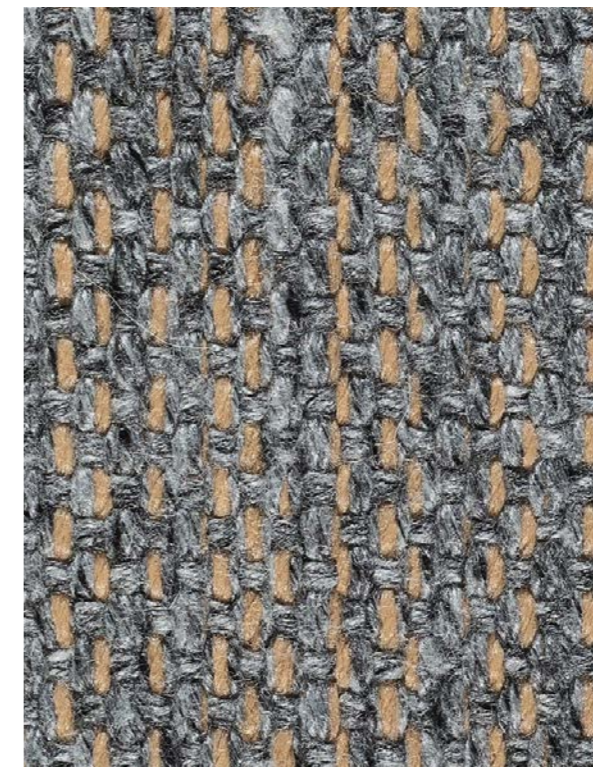


# HAMILTON

Should we invite Coco for dinner?



5908-00



5908-57



5908-225



5908-400



5908-114



5908-500

Quality:  
Handwoven

Composition:  
70% mix  
Wool/Viscose  
and 30% PP

140  
x  
200

170  
x  
240

200  
x  
300

300  
x  
400



# MIC-MAC

Scandinavian then, at other times ethnic.



3030-50



3030-52



3030-35



3030-19



3030-33



3030-CH632



3030-680

Quality:  
Handwoven

Composition:  
100% New  
Zealand Wool

70  
x  
250

140  
x  
200

170  
x  
240

200  
x  
300

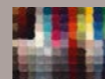
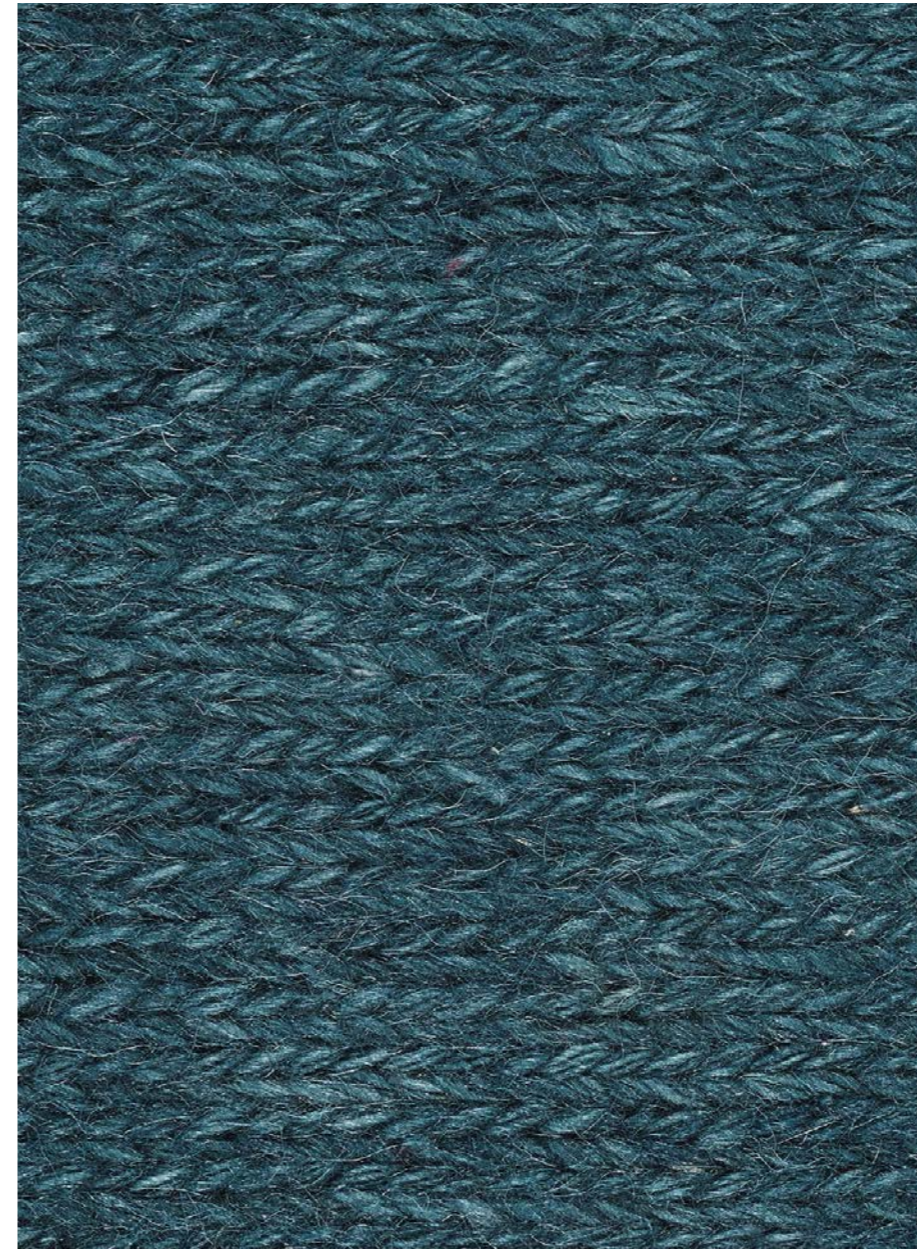


Photo Credit: Pol Quadens - 155Espace Déco - Vanessa Bruffaerts



# KITO

Elegance is all about being discreet.



4836-I11



4836-H2



4836-H10



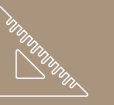
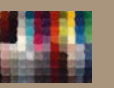
4836-D3

Quality:  
Handknotted  
25 knots

Composition:  
Handspun  
Wool

170  
x  
240

250  
x  
300



# WOOLLY

Fast and rigorous.



PL124



SA130



SS126



RM180



VE193

Quality:  
Tufted

Composition:  
Wool



Photo Credit: BWC



# MORRISON

Tracing my Scottish roots.



5905-355



5905-916



5905-999

Quality:  
Handwoven

Composition:  
100% Wool

170  
x  
240

200  
x  
300

Sizes  
without  
fringes



# BHUTAN

A contrast in colours and personality.



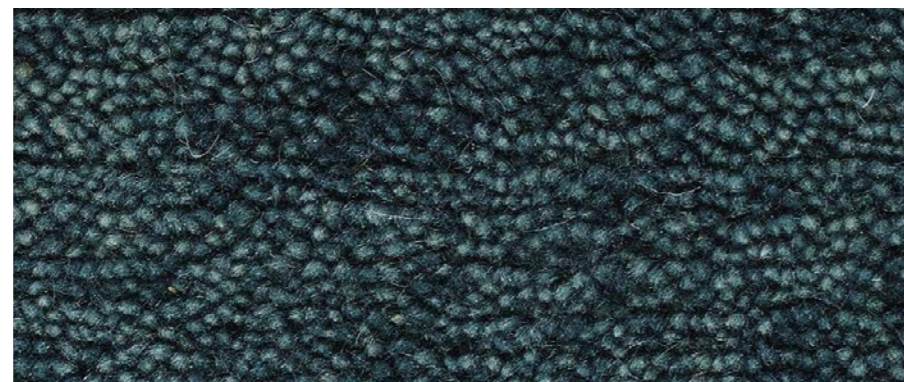
4835-A2



4835-C1



4835-C2



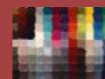
4835-I11

Quality:  
Handknotted  
30 Knots

Composition:  
100% New  
Zealand Wool

170  
x  
240

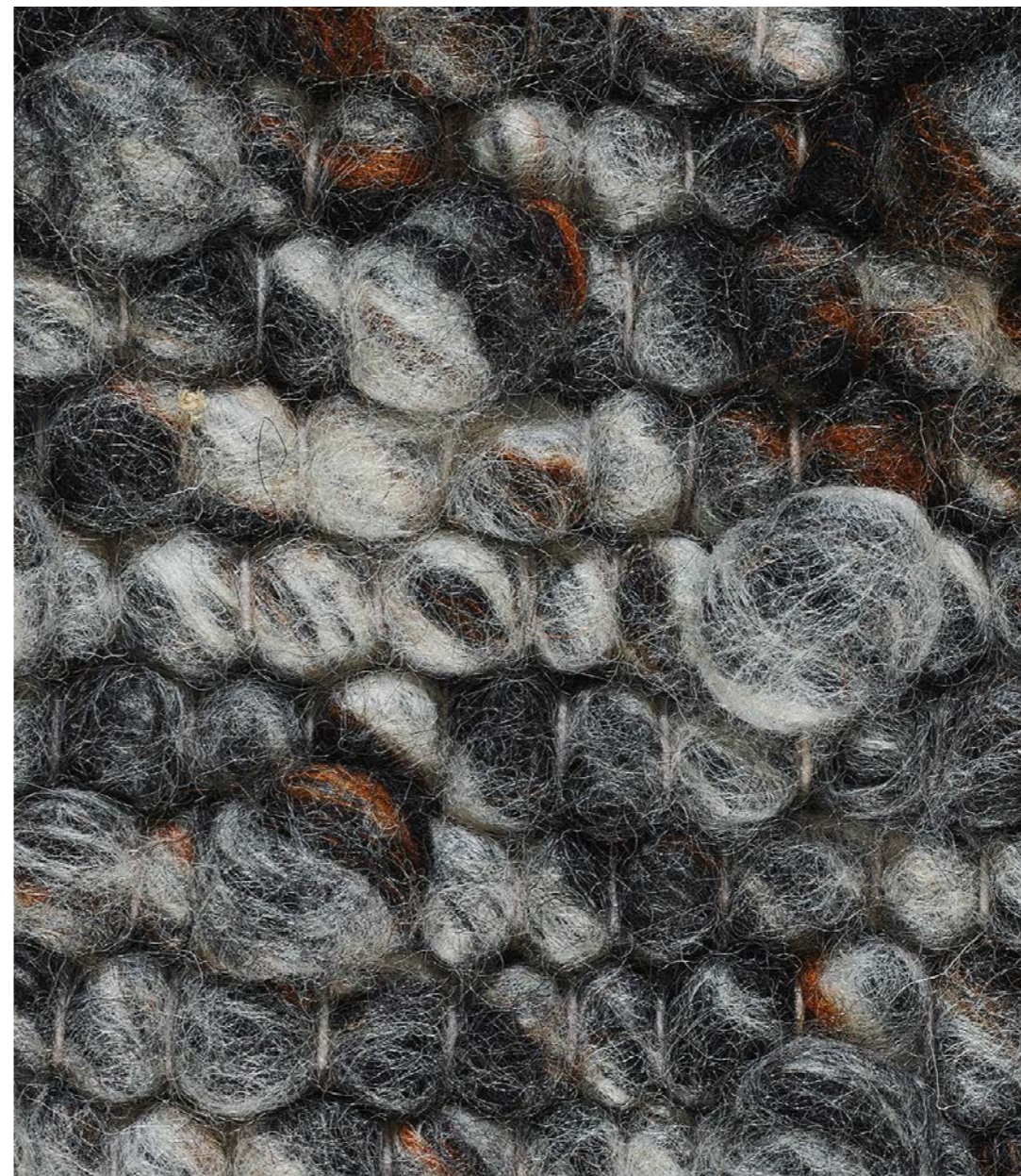
200  
x  
300





# LOOPING

Natural, perfectly imperfect.



5907-103



5907-054



5907-887

Quality:  
Handwoven  
with bumps

Composition:  
100% Wool

170  
x  
240

200  
x  
300



# WAVES

Tumultuously hygge to reach a comfortzone.



8091-57



8091-632



8091-56

Quality:  
Handwoven

Composition:  
100% Wool

170  
x  
240

200  
x  
300

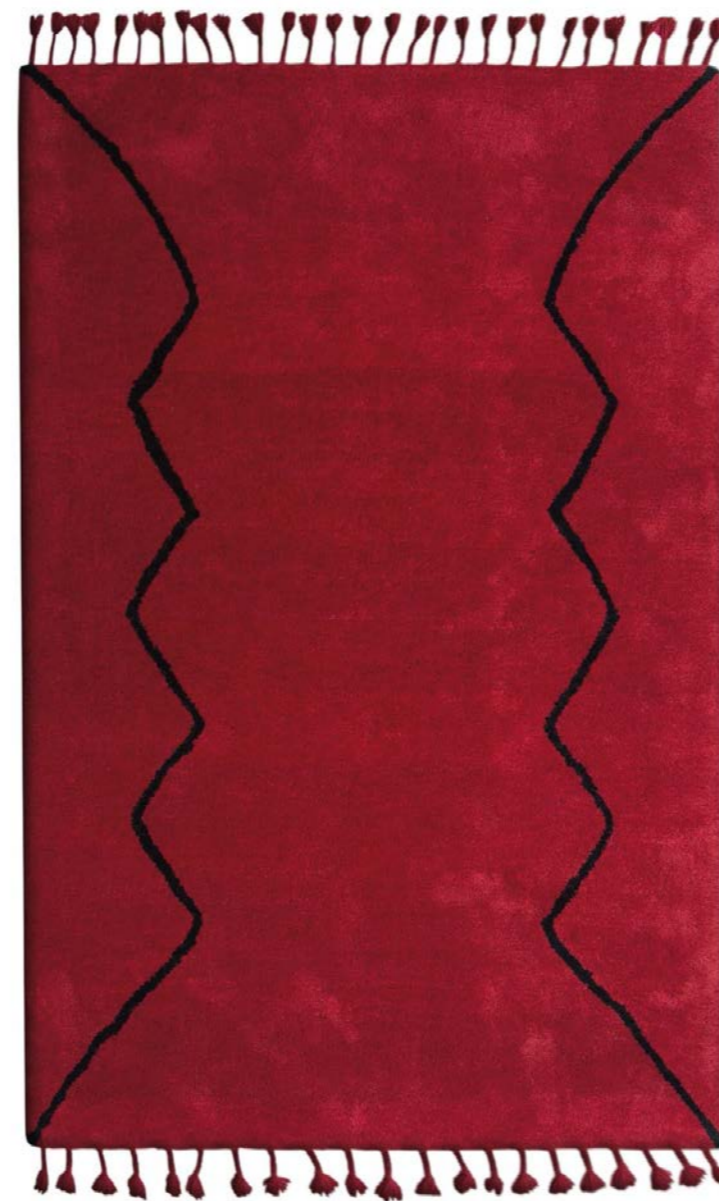






# BOUJAD

You could say I am a bit of a nomad!



8908-MONT-G8



8908-CRO-C4

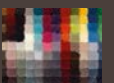
Quality:  
Handtufted

Composition:  
100% New  
Zealand Wool

140  
x  
200

170  
x  
240

Sizes  
without  
fringes



# ZAGORA

You can say again I am a bit of a nomad!



8906WB-KAD-500



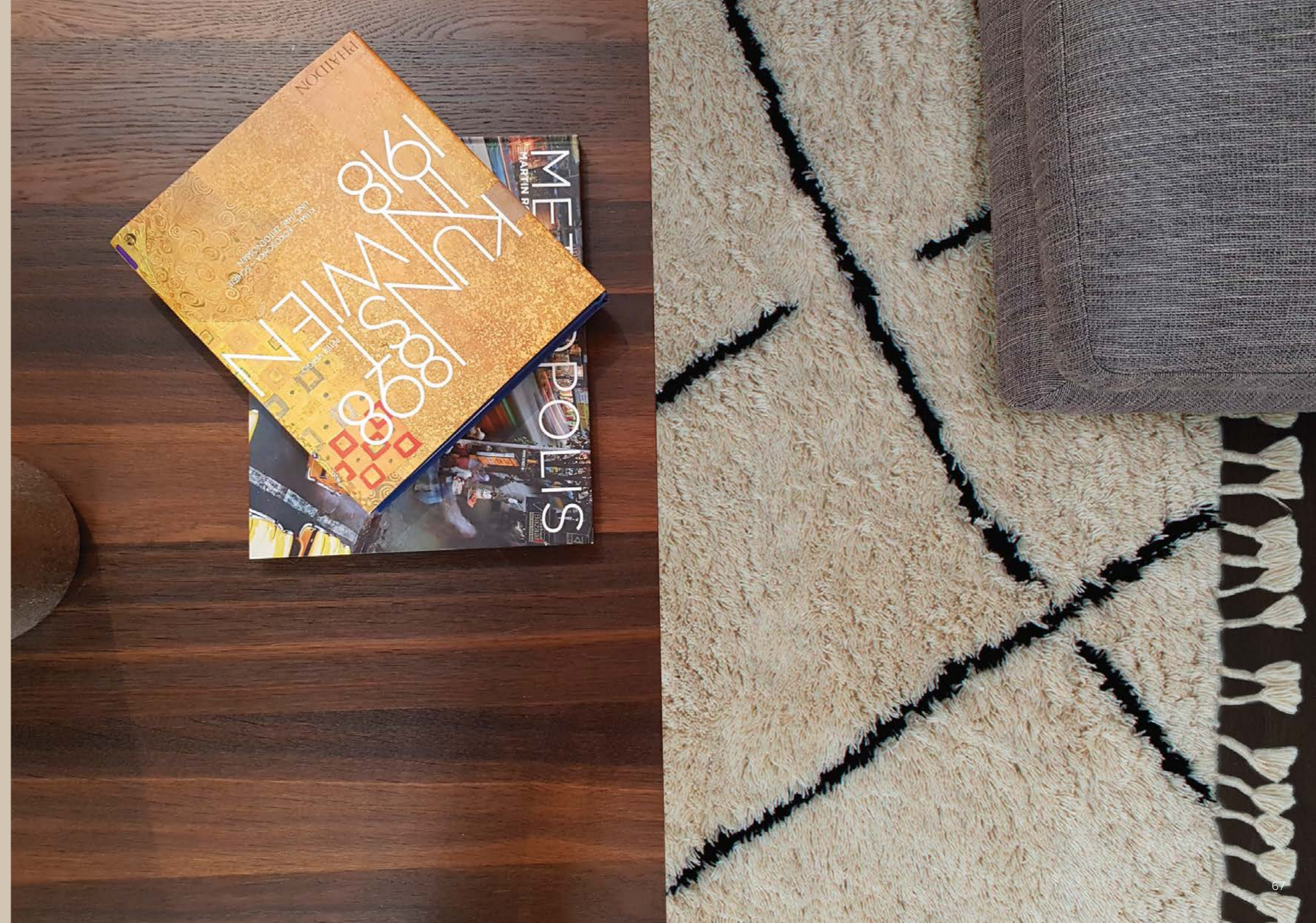
8906WB-NOM-91

Quality:  
Handtufted

Composition:  
100% Bikaner

170  
x  
240

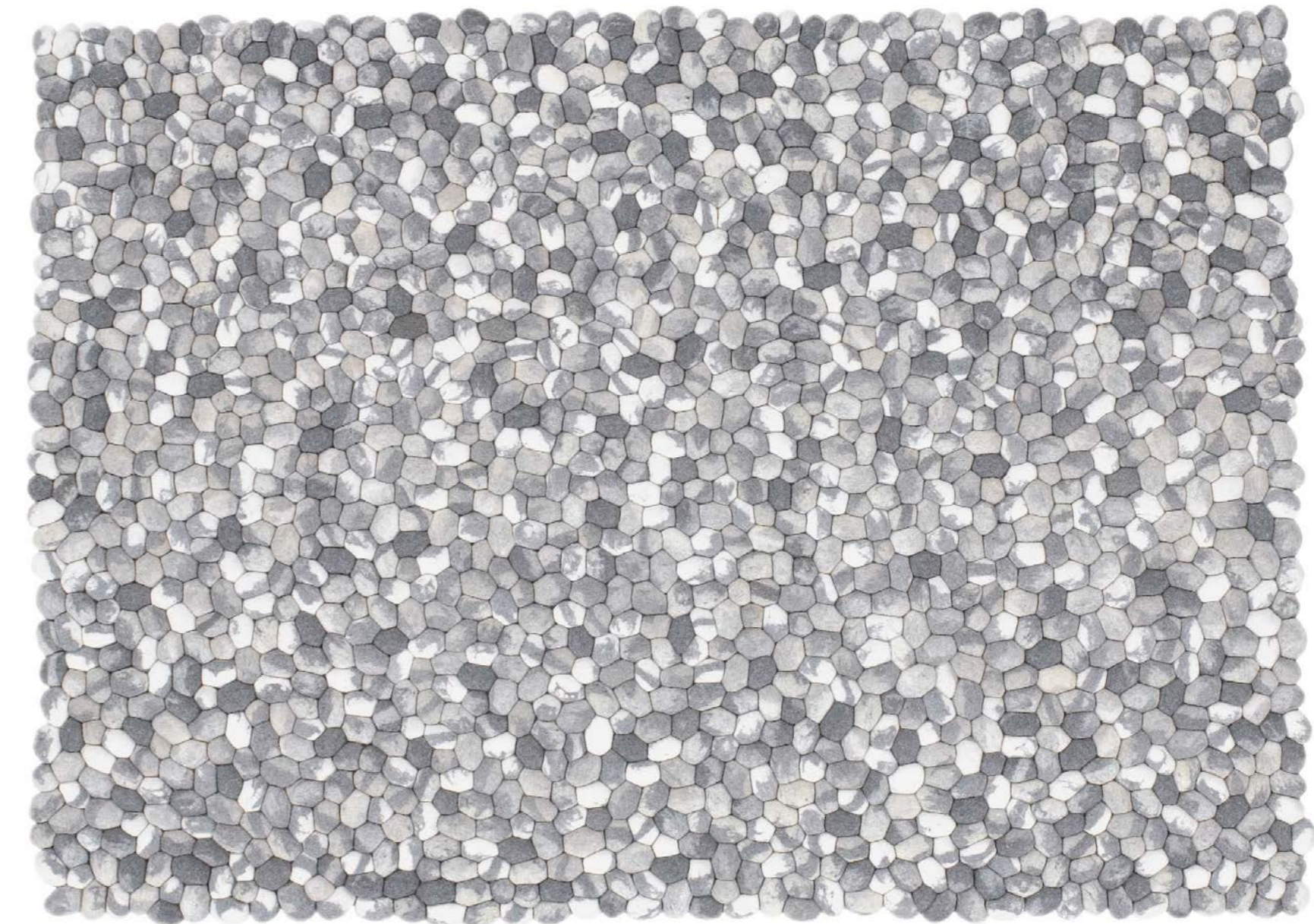
200  
x  
300





# ON THE ROCKS

Creating a relaxing place.



Quality:  
Handcrafted

Composition:  
100% Felted  
Merinos Wool

170  
x  
240

200  
x  
300

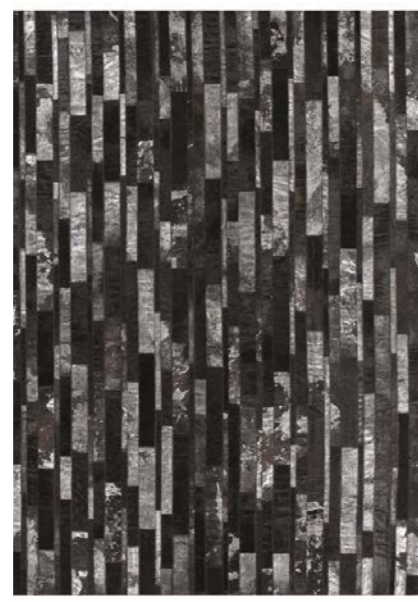


# STAR & STARLESS

Limitless or square, that is the question!



3115-0



3115-50



3118-500



3118-56



3118-CHEV500



3118-DIA500

Quality:  
Handcrafted

Composition:  
100%  
Cowskin

170  
x  
240

200  
x  
300



## ANNAPURNA



2170-04 2170-N2 2170-57

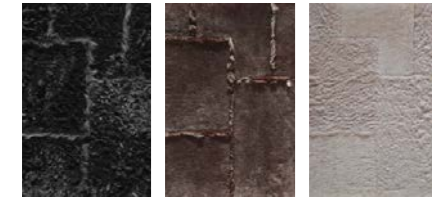
P33

PRICE RANGE ★ ★ ★



**Handtufted**  
**100% Viscose**  
Pile Height: 10mm  
Total Weight/m<sup>2</sup>: 5.5kg  
Sizes: 170x240cm, 200x300cm, 300x400cm  
Biggest size possible on demand

## BAIKAL



3111-PALO57 3111-PA85 3111-BLO632

P22

PRICE RANGE ★ ★ ★

**Handmade**  
**100% Lambswool**  
Pile Height: Low and high pile  
Sizes: made to measure  
Biggest size possible on demand

## BANGKOK



2171-A1L1 2171-C2L2 2171-B2J8

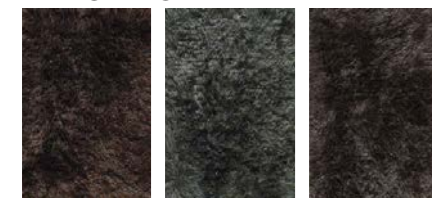
P37

PRICE RANGE ★ ★ ★



**Handtufted**  
**60% New Zealand Wool, 40% Viscose**  
Pile Height: 10mm  
Total Weight/m<sup>2</sup>: 4.1kg  
Sizes: 170x240cm  
Biggest size possible on demand

## BERGAMO



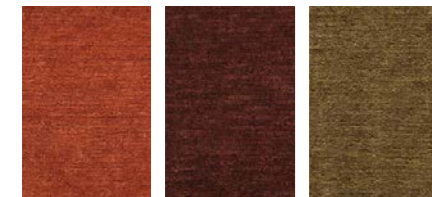
5512-853 5512-635 5512-55

P45

PRICE RANGE ★ ★ ★

**Handwoven**  
**100% Polyester**  
Pile Height: 45 mm  
Total Weight/m<sup>2</sup>: 5kg  
Sizes: 170x240cm, 200x300cm  
Any size possible on demand

## BHUTAN



4835-A2 4835-C2 4835-C1

P58

PRICE RANGE ★ ★ ★



**Handknotted (30 Knots)**  
**100% New Zealand Wool**  
Pile Height: 10mm  
Total Weight/m<sup>2</sup>: 4.6kg  
Sizes: 140x240cm, 200x300cm  
Biggest size possible: 500x1000cm

## BOUJAD



8908-CRO-C4 8908-MONT-G8

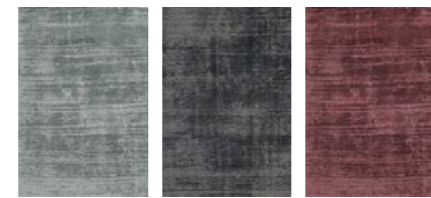
P65

PRICE RANGE ★ ★ ★



**Handtufted**  
**100% New Zealand Wool**  
Pile Height: 20mm  
Total Weight/m<sup>2</sup>: 3kg  
Sizes: 140x200cm, 170x240cm  
Biggest size possible: 400cm wide

## ERASED



2174-56 2174-57 2174-632

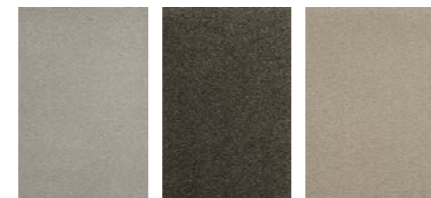
P30

PRICE RANGE ★ ★ ★



**Handwoven**  
**100% Viscose**  
Pile Height: 6mm  
Total Weight/m<sup>2</sup>: 4.5kg  
Sizes: 140x200cm, 170x240cm, 200x300cm, 300x400cm  
Any size possible (max width 4m)

## FAUX SILK



5575-636 5576-585 5575-04

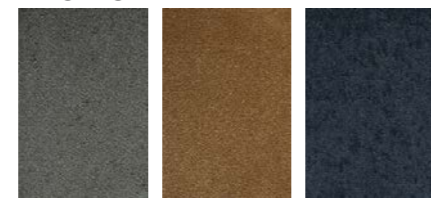
P41

PRICE RANGE ★ ★ ★



**Tufted**  
**100% PA**  
Pile Height: See collection  
Total Weight/m<sup>2</sup>: See collection  
Sizes: 200x300cm, 300x400cm  
Any size possible rolls (max width 4m)

## FAUX SILK



5570-57 5572-330 5574-221

P42

PRICE RANGE ★ ★ ★



**Tufted**  
**100% PA**  
Pile Height: See collection  
Total Weight/m<sup>2</sup>: See collection  
Sizes: 200x300cm, 300x400cm  
Any size possible rolls (max width 4m)

## HAMILTON



5908-00 5908-114 5908-500

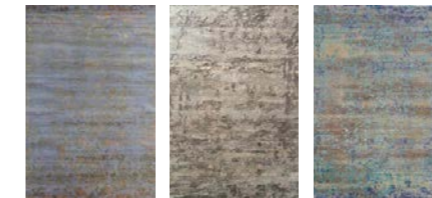
P49

PRICE RANGE ★ ★ ★



**Handwoven**  
**70% mix Wool/Viscose and 30% PP**  
Pile Height: flat  
Total Weight/m<sup>2</sup>: 2.6kg  
Sizes: 140x200cm, 170x240cm, 200x300cm, 300x400cm  
Biggest size possible: 400 cm wide

## HERITAGE



5100-L1R3 5100-655 5100-225

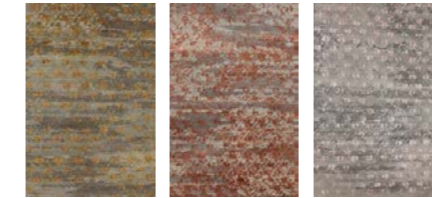
P14

PRICE RANGE ★ ★ ★



**Handknotted**  
**Wool & Bamboo Silk**  
Pile Height: 5 and 7 mm  
Total Weight/m<sup>2</sup>: 4.25kg  
Sizes: 170x240cm, 200x300cm  
Biggest size possible: 850x2000cm

## HERITAGE SCOTTISH



5100-SC-L1R3 5100-SC-L2R2 5100-SC-N4Q4

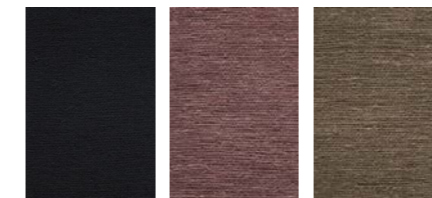
P17

PRICE RANGE ★ ★ ★



**Handknotted (100knots)**  
**Wool & Bamboo Silk**  
Pile Height: 5 and 7 mm  
Total Weight/m<sup>2</sup>: 4.25kg  
Sizes: 170x240cm, 200x300cm  
Biggest size possible: 850x2000cm

## KITO



4836-D3 4836-H2 4836-H10

P53

PRICE RANGE ★ ★ ★



**Handknotted (25 knots)**  
**Handspun Wool**  
Pile Height: Flat  
Total Weight/m<sup>2</sup>: 3kg  
Sizes: 170x240cm, 250x300cm  
Biggest size possible: 500x800 cm

## LAURA



3543-56 3543-500 3543-632

P46

PRICE RANGE ★ ★ ★



**Handwoven**  
**Mix Polyester, Wool & Viscose**  
Pile Height: 4.5 cm  
Total Weight/m<sup>2</sup>: 6.5kg  
Sizes: 140x200cm, 170x240cm, 200x300cm

## LEGACY



4900-GEN330 4900-GEN556

P6

PRICE RANGE ★ ★ ★



**Handknotted**  
**Wool & Bamboo Silk**  
Pile Height: 0.5cm  
Total Weight/m<sup>2</sup>: 3.6kg  
Sizes: 140x240cm, 200x300cm, 300x400cm  
Biggest size possible : 850x2000cm

## LONDON



640-AD2-033

P13

PRICE RANGE ★ ★ ★



**Handtufted**  
**80% New Zealand Wool & 20% Viscose**  
Pile Height: 10mm  
Total Weight/m<sup>2</sup>: 4kg  
Sizes: 200x300cm  
Biggest size possible: 5m wide

## LOOPING



5907-054 5907-103 5907-887

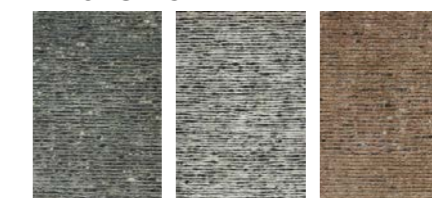
P61

PRICE RANGE ★ ★ ★



**Handwoven with bumps**  
**100% Wool**  
Pile Height: 2.25cm  
Total Weight/m<sup>2</sup>: 4.75kg  
Sizes: 170x240cm, 200x300cm  
Biggest size possible: 600x600cm

## MAJESTIC



3080-056 3080-600 3080-L1

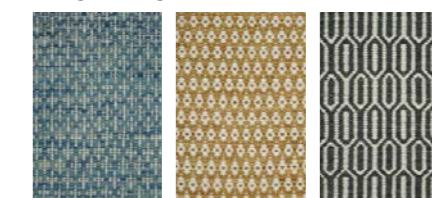
P25

PRICE RANGE ★ ★ ★



**Handknotted (80 knots)**  
**Bamboo silk & handspun wool**  
Pile Height: 9mm  
Total Weight/m<sup>2</sup>: 3.5kg  
Sizes: 170x240cm, 200x300cm, 300x300cm  
Biggest size possible on demand (max 600x1000 cm)

## MIC-MAC



3030-19 3030-33 3030-35

P50

PRICE RANGE ★ ★ ★



**Handwoven**  
**100% New Zealand Wool**  
Pile Height: Flat Dhurry  
Total Weight/m<sup>2</sup>: 2.6kg  
Sizes: 70x250mm, 140x200cm, 170x240cm, 200x300cm  
Any size possible

## MORRISON



5905-355 5905-999 5905-916

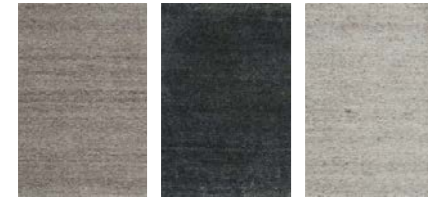
P57

PRICE RANGE ★ ★ ★



**Handwoven**  
**100% Wool**  
Pile Height: Flat  
Total Weight/m<sup>2</sup>: 3kg  
Sizes: 170x240cm, 200x300cm  
Any size possible

## MUSTI



2175-55 2175-57 2175-632

**P34** PRICE RANGE ★ ★ ★  
**Handtufted**  
**50% Wool and 50% Viscose**  
Pile Height: 8mm  
Total Weight/m<sup>2</sup>: 3.6kg  
Sizes: 140x200cm, 170x240cm, 200x300cm  
Biggest size possible: 400 cm wide

## ON THE ROCKS



805-56

**P69** PRICE RANGE ★ ★ ★  
**Handcrafted**  
**100% Felted Merinos Wool**  
Pile Height: 35mm  
Total Weight/m<sup>2</sup>: 6kg  
Sizes: 170x240cm, 200x300cm  
Any size possible

## REVENGE



4850-REV632 4850-REV225

**P5** PRICE RANGE ★ ★ ★  
**Handknotted**  
**New Zealand Wool, Viscose**  
Pile Height: 9mm & 6mm  
Total Weight/m<sup>2</sup>: 4kg  
Sizes: 170x240cm  
Biggest size possible 600x1000cm

## SAHARA



2170-CA444 2170-CA999

**P38** PRICE RANGE ★ ★ ★  
**Handtufted**  
**100% Viscose**  
Pile Height: 10mm  
Total Weight/m<sup>2</sup>: 5.8kg  
Sizes: 170x240cm, 200x300cm  
Biggest size possible 600x1000cm

## SIENA



3666-221 3666-355 3666-680

**P29** PRICE RANGE ★ ★ ★  
**Handknotted**  
**Bamboo Silk and Jute**  
Pile Height: 6mm  
Total Weight/m<sup>2</sup>: 1.8kg  
Sizes: 170x240cm, 200x300cm  
Biggest size possible: 4x10m

## SILKY



3059-0 3059-15 3059-56

**P18** PRICE RANGE ★ ★ ★  
**Handknotted (80 knots)**  
**100% Bamboo Silk - Handspun Yarn**  
Pile Height: 8 mm  
Total Weight/m<sup>2</sup>: 4.3kg  
Sizes: 170x240cm, 200x300cm, 300x400cm  
Biggest size possible: 400x600 cm

## SILKY DESIGN



3060-52 3061-632 3060-DUN5657

**P21** PRICE RANGE ★ ★ ★  
**Handknotted (80 knots)**  
**100% Bamboo Silk - Handspun Yarn**  
Pile Height: 8 mm  
Total Weight/m<sup>2</sup>: 4.3kg  
Sizes: 170x240cm, 200x300cm  
Biggest size possible: 400x600 cm

## STAR & STARLESS



3115-00 3118-500 3118-CHEV500

**P70** PRICE RANGE ★ ★ ★  
**Handcrafted**  
**100% Cowskin**  
Pile Height: Flat  
Total Weight/m<sup>2</sup>: 2.25kg  
Sizes: 170x240cm, 200x300cm  
Any size possible on demand

## SIGNATURE JF D'OR



640-JFP4-444

**P10** PRICE RANGE ★ ★ ★  
**Handtufted**  
**New Zealand Wool and Viscose**  
Pile Height: 10 mm  
Total Weight/m<sup>2</sup>: 4kg  
Sizes: 180x301cm  
Any size possible on demand

## SIGNATURE JULES WABBES



640-JWQD4J1

**P10** PRICE RANGE ★ ★ ★  
**Handtufted**  
**New Zealand Wool and Viscose**  
Pile Height: 10mm  
Total Weight/m<sup>2</sup>: 4kg  
Sizes: 200x300cm  
Any size possible on demand

## SIGNATURE LH DE KONINCK



640-LHDKV1SP

**P10** PRICE RANGE ★ ★ ★  
**Handtufted**  
**100% New Zealand Wool**  
Pile Height: 10 mm  
Total Weight/m<sup>2</sup>: 4kg  
Sizes: 200x300cm  
Any size possible on demand

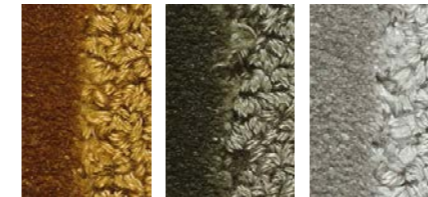
## SIGNATURE THOMAS KING



640-TKDOD-225 640-TKGRT-500

**P9** PRICE RANGE ★ ★ ★  
**Handtufted**  
**New Zealand Wool and Viscose**  
Pile Height: 10 mm  
Total Weight/m<sup>2</sup>: 4kg  
Sizes: Golden Ratio - 200x315mm, Dodeca - 250x330 mm  
Biggest size possible: 5m wide

## TENCELLA



6036-30 6036-47 6036-54

**P26** PRICE RANGE ★ ★ ★  
**Handtufted**  
**100% Tencel**  
Pile Height: 1.2cm  
Total Weight/m<sup>2</sup>: 5.1kg  
Sizes: 200x300cm, 300x400cm  
Biggest size possible: 500X1300 cm

## WAVES



8091-56 8091-57 8091-632

**P62** PRICE RANGE ★ ★ ★  
**Handwoven**  
**100% Wool**  
Pile Height: 15mm  
Total Weight/m<sup>2</sup>: 4.5kg  
Sizes: 170x240cm, 200x300cm  
Biggest size possible 400x600 cm

## WOOLLY



PL124-S RM180-S SS126-B2

**P54** PRICE RANGE ★ ★ ★  
**Tufted**  
**Wool**  
Biggest size possible: 400x500 cm

## ZAGORA



8906WB-KAD-500 8906WB-NOM-91

**P66** PRICE RANGE ★ ★ ★  
**Handtufted**  
**100% Bikaner**  
Pile Height: 45 mm  
Total Weight/m<sup>2</sup>: 3.8kg  
Sizes: 170x240cm, 200x300cm





Photo Credit: Didier Delmas,  
Hotel: Les Roches Blanches - Cassis  
Architect: Monika Kappel



Photo Credit: WP GORDIJNEN



Photo Credit: Didier Delmas,  
Hotel: Les Roches Blanches - Cassis  
Architect: Monika Kappel



FOR PROJECTS OR SPECIAL  
DESIGNS CONTACT US

[export@angelorugs.com](mailto:export@angelorugs.com)

